

JIM'S C&S

Hilldale Shopping Center
726 N. Midvale Blvd. B-2
Madison, WI 53705
(608) 233-2118

www.jimcoins.com



LOT 109

NO.67

**MAIL BID SALE #67
CLOSES OCTOBER 31, 2016 (HOLLOWEEN)**

- 1) **SEND ALL BIDS TO: JIM'S COINS, 726 N. MIDVALE BLVD. B-2, MADISON, WI 53705, OR FAX #608-233-0175, OR PHONE 608-233-2118, OR EMAIL: jimcoins@sbcglobal.net**
- 2) **THE HIGHEST BIDDER ACKNOWLEDGED BY THE AUCTIONEER SHALL BE THE BUYER. THE AUCTIONEER RESERVES THE RIGHT TO REJECT ANY BID OR WITHDRAW ANY LOT FROM THE SALE. BIDDERS ARE RESPONSIBLE FOR THEIR OWN ERRORS, SO DOUBLE CHECK YOUR BIDS. THE FIRST POSTMARK WINS IN CASE OF A TIE BID.**
- 3) **ALL SALES ARE FOR CASH AND ARE PAYABLE IMMEDIATELY UPON RECEIPT OF THE INVOICE.**
- 4) **AUCTIONS ARE OPEN TO ALL AND NO DEPOSIT IS REQUIRED OR DESIRED.**
- 5) **NO UNLIMITED BIDS ARE ACCEPTED. WINNING BIDDERS WILL BE AWARDED LOT AT A 10% ADVANCE OVER THE SECOND HIGHEST BID. IF NO OTHER BIDS ARE RECEIVED FOR A LOT, THE BIDDER WILL BE AWARDED THE LOT AT THE MINIMUM BID, OR ESTIMATE IF NO MINIMUM IS GIVEN.**
- 6) **ALL ITEMS ARE GUARANTEED GENUINE. BIDDERS MAY RETURN ANY ITEM NOT AS DESCRIBED.**
- 7) **A \$1 HANDLING CHARGE WILL BE ADDED TO ALL WINNING INVOICES. BID EARLY AND BID OFTEN. THANKS! - JIM**

*** = SEE PHOTOGRAPH**

2	ND	DOLL	COMMEM SILVER DOLLAR PLANCHET TYPE 2. ANACS	MS60	MB	\$125.00
3	2007	DOLL	WASHINGTON. MISSING EDGE LETTERING. NGC	MS65	MB	\$39.00
4	2007	DOLL	JOHN ADAMS. DBL EDGE LETTERING, INVERTED. NGC	MS65	MB	\$50.00
5	2008	DOLL	MONROE LITELY SINTERED PLAN, POSITION A. PCGS	MS64	MB	\$20.00
6	ND	DOLL	(2000-2010) BLANK PLANCHET, TYPE 2. PCGS	MS62	MB	\$45.00
*	7	1979	\$1 SBA LARGE DOUBLE CUD, RIM CUD AND TWO PRE-CUD DIE CRACKS CUD #2B PCGS	MS62	MB	\$740.00
*	18	1983	HALF STRUCK 10% OFF CENTER. NGC	MS64	MB	\$95.00
	29	1967	QUAR ON NICKEL PLANCHET. ANACS	AU58	MB	\$199.00
*	30	1967	QUAR SMS. PARTIAL COLLAR ON 28% STRAIGHT CLIP PLAN 3.7G. NGC. RARE	MS63	MB	\$265.00
	31	2000 D	QUAR SC. MISSING REV CLAD LAYER 4.7G. ANACS	AU55	MB	\$135.00
	32	2000	QUAR NH. 55% OFF CENTER. NGC	MS65	MB	\$230.00
	33	2002 D	QUAR MISS. STRUCK ON ELLIPTICAL PLANCHET. PCGS	MS64	MB	\$125.00
	44	1950S/D	DIME OMM FS-501. PCGS	MS64	MB	\$185.00
	45	1964 D	DIME DDR FS-018.5 DIE 1, VERY STRONG DD. ANACS	AU55	MB	\$125.00
	56	1969 S	NICK STRUCK 20% OFF CENTER, VERY RARE FULL STEPS, NOT ON TAG. NGC	MS66	MB	\$295.00
	57	1972 D	NICK COLLAR DIE BREAK 7-12:00, FULL STEPS. NGC	MS63	MB	\$85.00
	58	1974 D	NICK STRUCK ON CENT PLAN, 3.08G, RED BROWN. NGC MS63	MS63	MB	\$245.00
	59	1978 D	NICK ON CENT PLANCHET, RED BROWN. ANACS	MS61	MB	\$265.00
	60	1979 D	NICK D/S 90% INDENT 2ND STRK, GIGANTIC JEFF'S HEAD EXPANDED TO LARGER THAN SBA \$. PCGS	MS66	MB	\$495.00
	61	1994	NICK MATTE FINISH, PARTIAL COLLAR, 6 STEPS. ANACS MS64	MS64	MB	\$85.00
*	62	2006	NICK STRUCK ON ELLIPTICAL PLAN, 4.0G, 5FS, VERY RARE ON NEW NICKEL. NGC	AU58	MB	\$150.00
	63	ND	NICK STRUCK ON CENT PLAN, 3.07G. ICG	AU55	MB	\$165.00
*	64	ND	NICK OBV STRUCK THRU SPLIT-CAPPED DIE & CUD TOO! NGC	MS63	MB	\$195.00
*	65	ND	NICK STRUCK ON WEBBING SCRAP, 0.81G, 98% OFF CENTER ON BOWTIE SCRAP CUTE! NGC	MS65	MB	\$395.00

76	1941	CENT	RIM CLIP ANACS RED	MS63	MB	\$5.00
*	77	1968 D	CENT INCOMPLETE CLIP OBV & REV. ANACS RED	MS63	MB	\$215.00
78	1973 D	CENT	COLLAR CUD 6-11:30, RARE TYPE. PCGS RB	MS64	MB	\$135.00
79	1989	CENT	DDO, IDO-009. ANACS RB	MS63	MB	\$45.00
80	1995	CENT	DDO, DIE 2. VERY RARE. ANACS RED	MS66	MB	\$230.00
81	2000	CENT	STRUCK ON 2000-P DIME. GREAT DETAILS HIGH GRADE! NGC	MS68	MB	\$995.00
82	2002 D	CENT	BROADSTRUCK. RARE DATE! ANACS RED	MS63	MB	\$37.00
*	83	ND	CENT OBVERSE COUNTERBROCKAGE. NGC BROWN	MS64	MB	\$195.00
*	84	ND	CENT STRUCK ON BOWTIE PLAN SCRAP, 0.70G. NGC BROWN	MS64	MB	\$750.00
95	1805	1/2C	OBV DOUBLE STRIKE, 45 DEG ROTATION BETWEEN. V. LT SCR GENUINE PCGS	AG/G	MB	\$395.00
*	106	ND	CENT STRK BY CAP DIE. LOOKS LIKE POSSIBLE LATE SHIFTED CAP? ANACS RED	MS63	MB	\$25.00
*	107	2000	CENT BROADSTRUCK, INDENT ANACS RED	MS65	MB	\$40.00
*	108	1999	CENT GIGANTIC TRIPLE STRIKE. ANACS RED	MS64	MB	\$175.00
*	109	ND	CENT BROADSTRUCK BROCKAGE. ANACS RED	MS64	MB	\$130.00
110	ND	CENT	LINCOLN DOUBLE CLIP. ANACS RB	MS64	MB	\$10.00
*	111	1970 D	CENT TRIPLE STRUCK 2ND AND 3RD STRIKES 95% O/C 12:00 AND 3:00 ANACS RB	MS64	MB	\$235.00
*	112	ND	CENT COUNTERBROCKAGE WITH UNUSUAL RAISED METAL FOLD ACROSS OBV ANACS RED	MS63	MB	\$125.00
*	113	1968 D	CENT INCOMPLETE PUNCH. ANACS BROWN	MS62	MB	\$195.00
114	1943 D	CENT	UNCENTERED BROADSTRIKE. PCGS	MS60	MB	\$199.00
*	115	1955 S	CENT STRUCK 5% OFF CENTER. PCGS RED	MS64	MB	\$279.00
*	116	1971 S	CENT LC-71S-5 OBV CUD, VERY DEEP. PCGS RED	MS64	MB	\$179.00
*	117	1970 S	CENT DOUBLE STRUCK IN COLLAR. PCGS RB	MS64	MB	\$495.00
*	118	ND	CENT COUNTER BROCKAGE OBV. PCGS BROWN	MS63	MB	\$260.00
*	119	ND	CENT BROADSTRK W/ OBV CHAIN STRIKE BROCKAGES. NGC RED	MS64	MB	\$250.00
*	120	ND	CENT QUARTER SIZE BROADSTRK & 20% INDENT 3:30 + BU PLANCHET CRACK	BU	MB	\$45.00
*	121	1996	CENT MULTI STRIKE EARLER DATE W/ CAPPED DIE, LARGER THAN QUARTER	UNC	MB	\$110.00
*	122	ND	CENT WHEAT. STRUCK W/ EXPANDED BROCKAGE REV ON OBV, VERY CLEAR DETAILS	UNC	MB	\$185.00
*	123	ND	CENT ZINC. SADDLE STRIKE 75 & 85% OFF, DIE STRIKE REV, UNIFACE REV, GREAT HUMP	UNC	MB	\$75.00
*	124	196X	CENT SADDLE STRIKE, 35% O/C 7:00 DSBS, 95% O/C UNIFACE	MS63	MB	\$65.00
125	1955	CENT	30% CURVED CLIP 8:30	AU	MB	\$32.00
*	126	ND	CENT SADDLE STRIKE 75% O/C UNIFACE, 80% O/C DSBS, HUMP REV	UNC	MB	\$25.00
*	127	ND	CENT HUGE BROADSTRIKE W/ 95% INDENT 12:30	BU	MB	\$75.00
*	128	1972	CENT STRUCK THRU LATE STAGE CAPPED DIE	UNC	MB	\$20.00
*	129	1999	CENT HUGE REV CUD LC-99-3RB	BU	MB	\$235.00
*	130	1975 D	CENT MAJOR CUD OBV 7:30-10:30, LC-75D-2B	UNC	MB	\$115.00
141	ND	NICK	WAR TYPE. SPLIT IN HALF AFTER STRIKE, SCARCE, 2.62G	GOOD	MB	\$29.00
142	1944 S	CENT	10% OFF CENTER AT K 11:30	AU	MB	\$49.00
*	143	ND	CENT OBVERSE COUNTERBROCKAGE, GREAT EXAMPLE, SCARCE ERROR	AU	MB	\$125.00
*	144	196X D	CENT OFF CENTER ON HUGE CLIPPED PLAN. NGC RB	MS62	MB	\$75.00
145	1960 D	CENT	D/D SMALL/LARGE DATE, FS-101. ANACS RED	MS64	MB	\$175.00
*	146	1996	CENT REV FULLY UNPLATED & 90% OF OBV UNPLATED. LOOKS BU ANACS	AU58	MB	\$89.00
*	147	2001	CENT BROADSTRUCK & OFF CENTERED COUNTERBROCKAGE	CHBU	MB	\$100.00

* 148	1969 D	CENT	DOUBLE STRUCK, 2ND STRIKE 85% O/C @ K2, UNIFACE REV, STAIN ON REV	BU	MB	\$45.00
149	1917 D	CENT	10% OFF CENTER @ K 12:30	CIRC	MB	\$49.00
* 150	ND	CENT	MASSIVE BRDSTRK, HUGE INDENT, SPLIT PLAN, QUARTER SIZE, RED	BU	MB	\$65.00
151	1944	CENT	BROADSTRUCK & PARTIAL COLLAR, CLEANED	XF	MB	\$20.00
* 152	ND	CENT	MASSIVE BRDSTRK W/ 95% PART BROCKAGE FROM BRDSTRK CENT, LARGER THAN QUARTER, RED	CHBU	MB	\$85.00
153	ND	CENT	MICKEY MOUSE DOUBLE STRIKE, DSBS, SCARCE, RB	UNC	MB	\$35.00
154	1944 S	CENT	5% O/C @ K12, TOUGHER DATE BEAUTY, RB	UNC	MB	\$38.00
155	ND	CENT	OFF CENTER STRIKE BY CAPPED DIE PLUS INDENT, SUPER SCARCE, RED	CHBU	MB	\$85.00
156	2001	CENT	FLIPOVER DOUBLE STRIKE ON BROADSTRUCK PLAN + INDENT, DSBS, WOW! RED	CHBU	MB	\$108.00
* 157	2000	CENT	D/S REVERSE DIE CAP, SIZE OF A QUARTER, RED	CHBU	MB	\$200.00
158	1949 S	CENT	BRDSTRK OUT OF COLLAR, SCARCE DATE FOR ERROR, CLEANED	AU	MB	\$31.00
* 159	ND	CENT	D/S BOTH O/C, 1ST STRIKE 70% O/C @ K3, 2ND STRIKE 85% O/C DSBS, RED	CHBU	MB	\$195.00
160	1974 D	CENT	BRDSTRK W/ 5% INDENT, SCARCE DATE FOR DOUBLE ERROR, REV SCRATCH	AU	MB	\$20.00
161	1997	NICK	TRIPLE CLIP. ANACS	MS64	MB	\$48.00
* 162	1972	NICK	STRUCK THRU CAPPED DIE, TOUGHER DATE BEAUTY!	CHBU	MB	\$35.00
163	1946 S	DIME	BRDSTRK OUT OF COLLAR LOOKS LIKE 10% O/C, SUPER SCARCE!	CIRC	MB	\$85.00
164	196(8)D	DIME	MISSING OBV CLAD LAYER BEFORE STRIKE.	AU	MB	\$42.00
165	ND	DIME	LATE STAGE BROCKAGE, GREAT EXAMPLE!	AU	MB	\$75.00
166	1952 S	DIME	STRUCK ON ROLLED THIN STOCK, 2.0G, 20% UNDERWEIGHT, RARE	CIRC	MB	\$49.00
167	ND	QUAR	OBV & REV CUD, WOC-ND-21 & 22, VERY SCARCE DOUBLE CUD	XF	MB	\$99.00
168	1981	QUAR	80% O/C @ K11:30, SCARCE THIS FAR OFF W/ DATE!	BU	MB	\$85.00
169	1985	NICK	DOUBLE STRUCK FLIPOVER. 2ND STRIKE 70% O/C. NGC	MS64	MB	\$55.00
170	1983	NICK	DOUBLE STRUCK FLIPOVER. 2ND STRIKE 85% O/C. NGC	MS64	MB	\$55.00
* 179	1996	\$50	FED. FR#2126-B. MISALIGNMENT ERROR. PMG	MS64	MB	\$550.00
* 180	1990	\$20	FED. MISALIGNED SEALS & SERIAL NUMBER	VF	MB	\$90.00
* 181	1963A	\$5	FED. NICE GUTTER FOLD	VF	MB	\$65.00
182	2003A	\$5	FED. MISSING GREEN SEAL	VF	MB	\$95.00
* 183	1976	\$2	FED. MISALIGNED SERIAL NUMBER & SEALS	AU	MB	\$49.00
* 184	1935D	\$1	SIL. NARROW ERROR, TYPE I INVERTED OVERPRINT. SUPER RARE EARLY DATE! PCGS PPQ	AU55	MB	\$950.00
* 185	1935E	\$1	SIL. MAJOR FOLDOVER ERROR. W/ RED TAPE FROM BUREAU	UNC	MB	\$495.00
* 186	1935E	\$1	SIL. 3 NOTES. GREATLY MISALIGNED SERIAL NUMBER & SEALS, W/ BOOKEND NOTES	GEM	MB	\$495.00
* 187	1969C	\$1	FED. LARGE FOLDOVER, SERIAL NUMBER PRINTED ON REV	CU	MB	\$395.00
188	1969	\$1	FED. OBVERSE BLACK INK SMEAR	AU58	MB	\$23.00
* 189	1969B	\$1	FED. MISALIGNED SEALS & SERIAL NUMBERS	VF	MB	\$38.00
190	1969C	\$1	FED. MISALIGNED SEALS & SERIAL NUMBERS TOUCHES BORDER	AU58	MB	\$32.00
* 191	1969D	\$1	FED. 15% REV TO OBV DARK OFFSET	AU	MB	\$23.00
* 192	1969D	\$1	FED. PRINTED FOLDOVER	CU	MB	\$395.00
* 193	1974	\$1	FED. INK SMEAR ON REV	VF	MB	\$59.00

194	1977A	\$1	FED. LIGHT BACK TO FRONT OFFSET	AU	MB	\$40.00	
*	195	1977A	\$1	FED. NICE FULL BACK TO FRONT OFFSET	CU	MB	\$85.00
*	196	1985	\$1	FED. OBV MISALIGNED 1ST PRINT. PINK MARKER IN RIGHT FIELD	VF	MB	\$36.00
*	197	1985	\$1	FED. PRE-BACK PRINT FOLDOVER, GUTTER FOLDS, PRINTED TEAR/ PCGS	AU	MB	\$730.00
*	198	ND	\$1	FED. OBSTRUCTED FACE PRINTING. PCGS	MS63	MB	\$1,450.00
*	199	ND	\$1	FED. INSUFFICIENT INKING OF FACE PRINTING. PCGS PPQ	AU58	MB	\$375.00
*	200	1863	NOTE	5 CENT FRACTIONAL SECOND ISSUE. GUTTER FOLD ERROR. PMG EPQ	AU58	MB	\$230.00
*	201	1988A	\$1	THREE CONSECUTIVE NOTES WITH MAJOR REV INK SMEAR PROGRESSIVELY DISAPATING	CU	MB	\$285.00
	211	1964D	HALF	DDO. FS-50-1964D-101	BU	MB	\$35.00
	212	1934	QUAR	DDO. FS-25-1934-101	GOOD	MB	\$20.00
	213	1941S	QUAR	LARGE "S". FS-25-1941S-503	AU58	MB	\$25.00
	214	1957	QUAR	TY 2 PROOF REV. FS-25-1957-901	BU	MB	\$17.50
	215	1958	QUAR	TY 2 PROOF REV. FS-25-1958-901	BU	MB	\$18.00
	216	1959	QUAR	TY 2 PROOF REV. FS-25-1959-901	BU	MB	\$17.50
	217	1960	QUAR	TY 2 PROOF REV. FS-25-1960-901	XF	MB	\$10.00
	218	1961	QUAR	TY 2 PROOF REV. FS-25-1961-901	XF	MB	\$10.00
	219	1962	QUAR	TY 2 PROOF REV. FS-25-1962-901	UNC	MB	\$17.00
	220	1963	QUAR	TY 2 PROOF REV. FS-25-1963-901	BU	MB	\$17.50
	221	1964	QUAR	TY 2 PROOF REV. FS-25-1964-901	BU	MB	\$17.50
	222	1958	QUAR	TY 2 PROOF REV. FS-25-1958-901. ANACS	MS63	MB	\$31.00
	223	1959	QUAR	TY 2 PROOF REV. FS-25-1959-901. ANACS	MS64	MB	\$35.00
	224	1963	QUAR	TY 2 PROOF REV. FS-25-1963-901. ANACS	MS63	MB	\$31.00
	225	1940D	DIME	RPM #2	BU	MB	\$24.50
	226	1970	DIME	2 COINS, P&D MINT, HIGH RELIEF. FS-10-901	VF	MB	\$10.00
	227	1935	NICK	DDR-1-R-V. FS-05-1935-801	FIN+	MB	\$80.00
	228	1936S	NICK	RPM #1. FS-05-1936S-501	FIN+	MB	\$18.50
	229	1943P	NICK	DDO DOUBLE EYE. FS-05-1943-106	VG	MB	\$15.00
	230	1944	CENT	D/S OMM #1. FS-01-1944D-511	VF	MB	\$130.00
	231	1944	CENT	D/S OMM #2. FS-01-1944D-512	VF	MB	\$32.50
	232	1951	CENT	D/S OMM #1. FS-01-1951D-511	XF	MB	\$17.00
	233	1952D	CENT	RPM #15/ WRPM #16-D BASE OF BUST	VF	MB	\$12.50
	234	1952	CENT	D/S OMM #1. FS-01-1952D-511	XF	MB	\$22.50
	235	1956D	CENT	RPM #8. FS-01-1956D-501	AU	MB	\$25.00
	236	MULT	CENT	7 COINS, ALL WHEAT. RPM	XF	MB	\$10.50
	237	MULT	CENT	9 COINS, ALL WHEAT. RPM 9 COINS, ALL WHEAT. RPM'S	VF	MB	\$12.00
	238	MULT	CENT	30 COINS, ALL WHEAT. RPM	VF	MB	\$37.50
	239	MULT	CENT	10 COINS, ALL MEMORIAL. RPM	BU	MB	\$20.00
	240	MULT	CENT	15 COINS, ALL MEMORIAL. RPM	BU	MB	\$25.00
	276	1938S	CENT	2 COINS. RPM #1 NORTH, RPM #2 WEST & NW	BU	MB	\$7.50
	277	1942S	CENT	2 COINS. UNLISTED RPM SOUTH	BU	MB	\$10.00
	278	1947+9	CENT	2 COINS. 1947S RPM #2 NORTH, 1949 S RPM #3 WEST	BU	MB	\$5.00
	279	1948+9	CENT	2 COINS. UNLISTED 1948D RPM WEST, 1949D RPM WEST, BOTH SPLIT SERIF	BU	MB	\$3.00
	280	1949S	CENT	RPM #3 WEST	BU	MB	\$2.50
	281	1950D	CENT	UNLISTED RPM NE CLOSE BUT CLEAR SHOW TOP & INSIDE	BU	MB	\$2.50
	282	1950+1	CENT	2 COINS. UNLISTED 1950 RPM WEST, SPLIT SERIF, 1951 RPM EAST LOWER LOOP	BU	MB	\$2.00
	283	1952D	CENT	2 COINS. RPM #2 WEST, RPM #3 WEST	BU	MB	\$4.00
	284	1952S	CENT	3 COINS. UNLISTED RPMS ALL DIFFERENT SPLIT SERIF	BU	MB	\$6.00
	285	1952D	CENT	3 COINS. RPM #10 SOUTH	BU	MB	\$6.00

286	1953D	CENT	RPM #1 WEST	VF+	MB	\$2.00	
287	1953S	CENT	3 COINS. UNLISTED RPM, ALL DIFFERENT, ALL WEST	BU	MB	\$1.50	
288	1954D	CENT	2 COINS. RPM #3 SOUTH	BU	MB	\$3.00	
289	1955S	CENT	RPM #2 EAST	BU	MB	\$2.00	
290	1959D	CENT	RPM #1 WEST & SE	XF	MB	\$2.50	
291	1959D	CENT	10 COINS. RPM #4, 5 & 10. PLUS 7 UNLISTED RPM	BU	MB	\$5.00	
292	1961D	CENT	5 COINS. RPM #4 WEST, #12 NORTH, #25 EAST, #39 SE, #47 SW	BU	MB	\$3.00	
303	1917S	CENT	5% O/C @ K11:00. SCARCE DATE	VF	MB	\$26.00	
304	1918S	CENT	UNCENTERED BRDSTRK, SCARCE DATE	XF	MB	\$26.00	
305	1942	CENT	LARGE ON CENTER BRDSTRK, ALMOST NICKEL SIZE	XF	MB	\$18.00	
306	1942	CENT	REV SPLIT OFF AFTER STRIKE, 1.59G, 49% UNDERWEIGHT. CLEANED	VF+	MB	\$28.00	
307	1943	CENT	LARGE ON CENTER BRDSTRK, ALMOST NICKEL SIZE, SCARCE ON STEEL CENT. CORROSION	VF+	MB	\$40.00	
308	1944	CENT	UNCENTERED BRDSTRK, SCARCE DATE	AU	MB	\$20.00	
309	1946	CENT	LARGE ON CENTER BRDSTRK, ALMOST NICKEL SIZE, TOUGHER DATE	XF	MB	\$25.00	
*	310	1950S	CENT	5% O/C @ K11:00 W/ A LONG RAGGED CLIP @ K10-12 ON A ROLLED THIN PLAN, 2.12G	AU	MB	\$55.00
311	1951S	CENT	15% CURVED CLIP @ K10-12:30, 2.65G, SCARCE ERROR DATE. RED BROWN	AU	MB	\$18.00	
312	1952D	CENT	UNCENTERED BRDSTRK, SCARCE DATE, BEAUTY! RED BROWN	AU	MB	\$28.00	
313	1952D	CENT	LARGE UNCENTERED BRDSTRK, SCARCE DATE. CLEANED	AU	MB	\$21.00	
314	1955	CENT	TRIPLE CLIP 4% @ K11, 2% @ K8:30 & RIM CLIP @ K1:30, 2.94G. RED BROWN	UNC	MB	\$15.00	
315	1955S	CENT	BRDSTRK OUT OF COLLAR, VERY SCARCE DATE, NICE! RED BROWN	UNC	MB	\$36.00	
316	1959	CENT	10% O/C @ K1:00, TOUGHER DATE!	XF	MB	\$44.00	
317	1960D	CENT	LG DT. HUGE ON CENTER BRDSTRK, NICKEL SIZE, UNC TOUGH DATE, NICE! BROWN	UNC	MB	\$24.00	
318	1964	CENT	REV SPLIT OFF AFTER STRIKE, 1.67G, 47% UNDERWEIGHT, SCARCE	XF	MB	\$23.00	
319	1964	CENT	STRUCK ON SPLIT BEFORE STRIKE PLAN, SCARCE TOUGHER DATE. NGC RED BROWN	UNC	MB	\$29.00	
320	1966	CENT	LARGE ON CENTER BROADSTRIKE, ALMOST NICKEL SIZE, NICE! RED BROWN	UNC	MB	\$16.00	
321	1967	CENT	8% RAGGED CLIP @ K12:30, 2.86G, GREAT LOOKING EXAMPLE. ANACS	AU58	MB	\$24.00	
322	1971D	CENT	2 FULL DATES! 80% O/C @ K9:30 & REV MIRROR BROCKAGE. RARE	XF+	MB	\$65.00	
323	197(9)?	CENT	COUNTERBROCKAGE - LATE STAGE, GREAT EXAMPLE, VERY SCARCE ERROR TYPE	AU	MB	\$55.00	
*	324	1987	CENT	1 1/2 DATES, DOUBLE STRUCK 2ND STRIKE 80% O/C @ K3 & ROT 135DEG CW, UNIFACE REV. NICE! RED	UNC	MB	\$50.00
*	325	1989	CENT	ON CENTER BRDSTRK W/ 30% BROCKAGE. NICKEL SIZE. BEAUTY. RED	GEM	MB	\$24.00
326	1991	CENT	1 3/4 DATES, FULL DT ON OBV & 3/4 DT REV. FLIPOVER D/S. 2ND STRK 90% O/C @ K12:30 & ROT. UNI OBV. ANACS RED	MS64	MB	\$75.00	
*	327	2000	CENT	HUGE, LARGER THAN NICKEL, ON CENTER BROADSTRIKE W/ 50% OBV BROCKAGE. TONING, RED BROWN	BU	MB	\$29.00
*	328	2000	CENT	MASSIVE ON CENTER BRDSTRK, ALMOST QUARTER SIZE. BEAUTY. RED	GEM	MB	\$19.00
329	ND	CENT	WHEAT CENT, OBV SPLIT OFF AFTER STRIKE, 1.7G, 45% UNDERWEIGHT	VF	MB	\$38.00	

330	ND	CENT	COUNTERBROCKAGE - LATE STAGE, GREAT EXAMPLE, SCARCE	XF	MB	\$50.00
331	19XX	CENT	COUNTERBROCKAGE - LATE STAGE, GREAT EXAMPLE, VERY SCARCE TYPE. RED BROWN	UNC	MB	\$62.00
*	332	ND	CENT D/S - BOTH O/C - 98% & 95%, SMALLER STRIKE DSBS, LARGER STRIKE HAS UNI OBV, UNUSUAL. RED	CHBU	MB	\$35.00
*	333	ND	CENT D/S - BOTH O/C - 95% & 98%, DSBS ON BOTH STRIKES	UNC	MB	\$48.00
	334	1896	NICK REV SPLIT OFF AFTER STRIKE, SCARCE ON LIB NICKEL. ICG	G4	MB	\$39.00
*	335	1943(?)	NICK AMAZING! REV SPLITTING OFF AFTER STRIKE, THEN NATURALLY BROKE IN HALF, 1.14G, 77% UNDERWEIGHT	G/VG	MB	\$59.00
*	336	1943S	NICK LARGE UNCENTERED BRDSTRK. VERY SCARCE!	VG	MB	\$64.00
	337	1944(?)	NICK REV SPLIT OFF AFTER STRIKE, 1.99G, 60% UNDERWEIGHT. SCARCE! DARK TONING	VG	MB	\$32.00
*	338	1949S	NICK HUGE QUART. SIZE UNCENTERED BRDSTRK, VERY RARE DATE FOR ANY ERROR	FIN	MB	\$76.00
	339	1954	NICK REV SPLIT OFF AFTER STRIKE, TOUGHER DATE. ANACS	VF30	MB	\$38.00
	340	1957	NICK REV SPLIT OFF AFTER STRIKE, 2.65G, 47% UNDERWEIGHT	VG/F	MB	\$38.00
	341	1964	NICK HUGE QUART SIZE UNCENTERED BRDSTRK. BEAUTY	VF+	MB	\$29.00
*	342	ND	NICK STRUCK THRU MID-STAGE UNIFACE DIE CAP, VERY SCARCE!	AU	MB	\$65.00
*	343	ND-P	NICK OBV SPLITTING OFF AFTER STRIKE, THEN NATURALLY BROKE IN HALF, WEIGHS 1.17G, 77% UNDERWEIGHT. DARK TONING	VG/F	MB	\$55.00
*	344	1982(?)	DIME OBV STRUCK THRU DETACHED CLAD LAYER. VERY SCARCE & DRAMATIC	XFAU	MB	\$65.00
*	355	1923	DOLL 5MM PLAN CRACK 5:30 OBV & REV	UNC	MB	\$65.00
	356	1934D	DOLL VAM 3 STRONG DDO	VG	MB	\$37.00
*	357	1976S	DOLL SIL. MAJOR STRUCK THRU STRING OBV, VERY HEAVY OBV SCRATCH	UNC	MB	\$300.00
*	358	1999	DOLL STRUCK IN RETAINED BLACK GRIME 3:30-5 OBV	BU	MB	\$15.00
*	359	1999	DOLL STRUCK THRU THICK STRING ON FACE OBV	BU	MB	\$18.00
*	360	1999	DOLL LG 5X7MM STRUCK IN RETAINED BLACK GRIME OBV	BU	MB	\$45.00
	361	ND	DOLL TY 2 IKE DOLLAR BLANK PLAN	UNC	MB	\$115.00
	362	ND	DOLL TY 2 IKE DOLLAR BLANK PLAN	BU	MB	\$115.00
	363	ND	OTHER 1 OZ PROOF SILVER ROUND BLANK	PRF	MB	\$45.00
*	374	1894S	HALF CENTERED BRDSTRK W/ TILTED PART COLLAR	XF	MB	\$325.00
	375	1937S	HALF LAMINATION CRACK OBV	VF	MB	\$14.00
	376	1955	HALF "BUGS BUNNY" DIE CLASH	MS64	MB	\$26.50
	377	1964	HALF 5% CLIP 8:00	AU58	MB	\$9.50
	378	1965	HALF DOUBLE DIE OBV	SMS	MB	\$6.00
	379	1966	HALF 1% CLIP 5:00	AU	MB	\$4.50
	380	1971D	HALF 2% CLIP 9:00	AU58	MB	\$3.50
*	381	1986	HALF D/S 2ND 90% O/C 3:30 DSR, BROCKAGED OBV, SILVER PLATED	AU	MB	\$115.00
	382	ND	HALF TY 2 HALF PLANCHET	UNC	MB	\$60.00
	393	1952D	QUAR D/D RPM #1	CHBU	MB	\$18.00
	394	1963	QUAR STRONG DDO. FS-101	MS64	MB	\$24.00
	395	1979D	QUAR MISSING REV CLAD LAYER BEFORE STRIKE	BU	MB	\$45.00
	396	1993	QUAR 40% INDENT @ K12 + PART COLLAR	MS63	MB	\$95.00
*	397	1999	QUAR CT. D/S 2ND STRIKE 75% O/C 4:00	UNC	MB	\$135.00
	398	1999	QUAR CT. LARGE UNCENTERED BRDSTRK	BU	MB	\$16.00



84



62



18



146



7



108



117



144



24



113



77



115



111



106



116



179



180



181



183



185



201



200



199



198



197



192



193



195



196



184



186



187



189



191

Become a CONECA Member

The Combined Organizations of Numismatic Error Collectors of America

Not yet a member of the world's greatest coin club ?
It's as easy as 1-2-3 to join !

Step 1 — Your Info

Your Name:
Your Mailing Address:
Your Email Address:
Your Phone number:
Username:
Password:
Username and Password will provide you access to CONECA 'members only' area. (Your information will NOT be provided to others).
Recommended by: James Essence Jim's Coins



Step 2 — Your Choices

Dues ONE year	
Adult member	\$ 25.00
Young member (under 18)	\$ 7.50
Mailing Options	
U.S. Bulk Rate	\$ 0.00
First Class or Foreign	\$ 12.50
Total payable to CONECA	

Dues TWO years	
Adult member	\$ 50.00
Young member (under 18)	\$ 15.00
Mailing Options	
U.S. Bulk Rate	\$ 0.00
First Class or Foreign	\$ 25.00
Total payable to CONECA	

Step 3 — Mail in Payment

Send your check or money order payable to CONECA:

Rachel Irish
101 W. Prairie Center #323
Hayden, ID 83835

MRIrish5@roadrunner.com

Your membership is subject to approval by the Membership Committee and subject to the rules and regulations set forth in the CONECA Constitution and By-Laws.



**SUBSCRIPTION FOR THE YEAR 2016
DON'T MISS ANY OF THESE SALES!
SEMI-MONTHLY ERROR CATALOGS PUBLISHED FOR THE PAST 29 YEARS!**

THE SUBSCRIPTION PRICE IS \$8.00 FOR SIX CATALOGS ON A SEMI-MONTHLY BASIS. COST OF PRINTING AND MAILING THE LAST CATALOG WAS \$2.06 EACH. WE DON'T MIND SENDING CATALOGS TO COLLECTORS OF CATALOGS IF YOU SHARE IN THE COST OF THE CATALOGS.

WE WILL AUTOMATICALLY BILL \$8.00 SUBSCRIPTION DUES TO ALL WINNING BIDDERS WHO HAVE NOT YET PAID UNLESS OTHERWISE PAID OR INFORMED. ** FEE WAIVED ** IF YOU WOULD LIKE TO RECEIVE FUTURE AUCTIONS AND ARE NOT ON OUR MAILING LIST, PLEASE SEND ADDRESS AND/OR EMAIL ADDRESS AND YOU WILL BE ADDED TO THE SUBSCRIPTION LIST.

WE HAVE A FULL SERVICE COIN & STAMP STORE THAT IS LOCATED IN HILLDALE MALL IN MADISON, WI. PLEASE FEEL FREE TO STOP BY IF YOU ARE IN TOWN.

WE ARE ALSO ENTHUSIASTIC BUYERS OF ALL ERRORS AS WELL AS NORMAL COINS, STAMPS AND COLLECTIBLE RED/BLUE BOOKS!

PLEASE VISIT OUR WEB SITE AT www.Jimscoins.com MANY OF THE PHOTOS IN THE WEB SITE VERSION ARE *FULL COLOR*.

NEW PROGRAM: FREE CONECA MEMBERSHIP UPON REQUEST FOR NEW MEMBERS WITH WINNING BIDS TALLING \$50 OR MORE.

CONSIGNORS: GETTING TOUGHER TO FIND ERRORS TO FILL THE AUCTIONS. IF YOU HAVE SOME TO SELL OR CONSIGN, PLEASE LET US KNOW. TERMS ARE 15% COMMISSION, YOU SET THE MINIMUM BID AND NO CHARGE IF THE COIN DOES NOT SELL. ALSO BID GENEROUSLY SO WE CAN AFFORD TO BUY SOME MORE. HEH-HEH. - JIM

NOTES FOR J-67: IT'S BEEN A WHILE SINCE THE LAST AUCTION. THANK YOU FOR YOUR PATIENCE AND WORDS OF SUPPORT THAT YOU LIKE AND MISS THE AUCTIONS! BID MORE AND CONSIGN MORE TO KEEP THEM GOING MORE OFTEN! TO MAKE UP FOR THE DELAY, THIS IS OUR BIGGEST AUCTION YET, NUMBER-OF-LOT-WISE. ALSO NOTE WE DID NOT MOVE, BUT PO CHANGED OUR STREET NUMBER TO "726 MIDVALE" DUE TO CONSTRUCTION OF NEW BUILDINGS. BEST WISHES FOR A HAPPY HALLOWEEN AND THANKSGIVING! THANKS TO ALL OF YOU FOR MAKING THE AUCTIONS A SUCCESS! -JIM

NAME _____

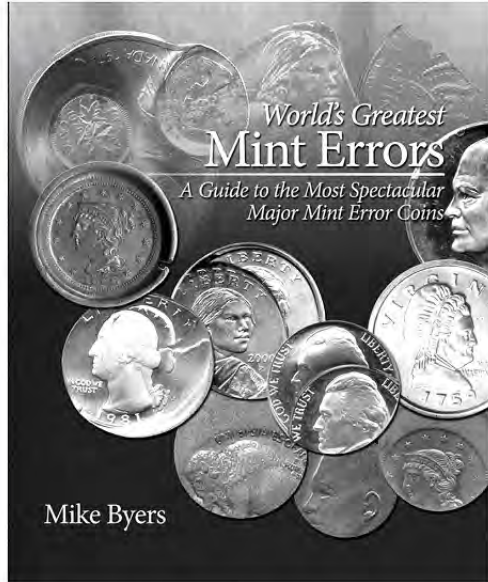
ADDRESS _____

CITY _____ STATE _____ ZIP _____

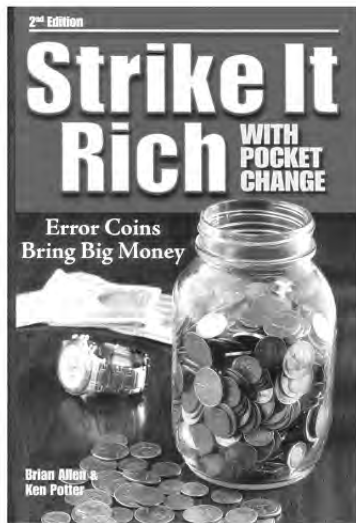
PHONE (OPTIONAL) _____

YOUR ADDRESS LABEL HAS A YEAR ON IT SO YOU WILL KNOW WHEN YOUR SUBSCRIPTION EXPIRES.

THANKS AGAIN TO ALL OF YOU! - JIM



Exciting new book! A great way to enjoy some of the "World's Greatest Mint Errors" for about the cost of a good meal! Deluxe large-size hardcover with all-color pics. Just \$37.95 ppd.



Strike it rich with pocket change! Great book for gift or for reference. Illustrates varieties that can be found in circulation. 320 pg. \$17.99 ppd



120



121



122



123



124



126



127



128



129



130



147



148



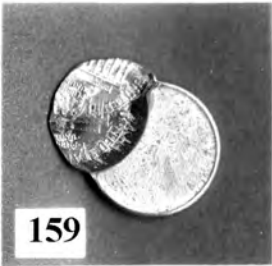
150



152



157





355



357 1776-1976



358



359



360



374



381



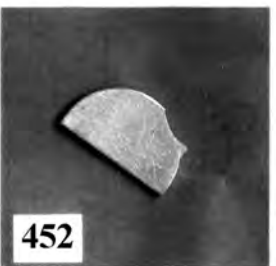
396



397



451



452



453



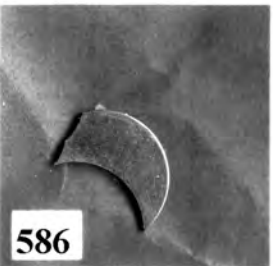
469



472



476



399	1999	QUAR	CT. UNCENTERED BRDSTRK	BU	MB	\$15.00	
400	1999	QUAR	GA. UNUSUAL HEAVY POLISH LINES OBV & REV	BU	MB	\$1.00	
401	2000	QUAR	SC. UNCENTERED BRDSTRK	BU	MB	\$15.00	
402	2003	QUAR	IL UNCENTERED BRDSTRK W/ PART COLLAR	BU	MB	\$18.00	
403	2007	QUAR	WA. UNCENTERED BRDSTRK, LOOKS 5% O/C TOUCH OF COLLAR	BU	MB	\$19.00	
404	2007	QUAR	WY. OBV & REV STRUCK THRU LIKE MOVING HORSE & RIDER	BU	MB	\$2.00	
405	2008	QUAR	NM. STRUCK THRU OBV LIKE GEORGE BLOWING SMOKE	BU	MB	\$1.00	
406	2008	QUAR	OK. MULTI HEAVY DIE SCRATCHES, LOOKS LIKE WIND FROM BIRD	BU	MB	\$2.50	
407	2015	QUAR	KISS. SEVERE DIE WEAR LOOKS LIKE DDO	BU	MB	\$2.50	
408	ND	QUAR	TY 1 QUART SIZE COPPER PLAN	UNC	MB	\$2.00	
419	1934D	DIME	LG D OVER SM D. FS-501. RARE	XF	MB	\$55.00	
420	1940S	DIME	LIGHT SPLIT DIE, DIE CRACK K12-6	AU	MB	\$20.00	
421	1940S	DIME	HEAVY DIE POLISH MISSING BRIDGE OF NOSE	BU	MB	\$16.00	
422	1940S	DIME	RIM CUD 4:00 REV	GEM	MB	\$22.00	
423	1944S	DIME	LARGE STRIKE THRU ON HEAD	VF	MB	\$5.00	
424	1946	DIME	STRUCK W/ RUSTED & OVERPOLISHED DIES, WHISKERS & NOSE HAIR	BU	MB	\$7.50	
425	1946D	DIME	5% O/C, RARE DATE	AU58	MB	\$99.00	
426	1950SD	DIME	S OVER D MINT MARK, FS-501	UNC	MB	\$65.00	
427	1956	DIME	DOUBLE DIE REV	PRF	MB	\$16.00	
428	1959D	DIME	BRDSTRK & TILTED PART COLLAR, REV SCRATCH AU	MB		\$39.00	
429	1960	DIME	SMALL RAGGED CLIP 12:00	BU	MB	\$3.50	
430	1963	DIME	MINOR DOUBLE DIE REV	PRF	MB	\$3.50	
431	1964	DIME	VERY THICK "WE" & DIE CHIP	PRF	MB	\$5.00	
432	1964	DIME	VERY THICK "WE" & DIE CHIP	PRF	MB	\$5.00	
433	1964D	DIME	CUD #2 TOP OF HEAD & DIE CRACKS, REV CUD	BU	MB	\$95.00	
434	1968S	DIME	STRIKE THRU STRING ON NOSE AND IN FIELD	PF67	MB	\$3.50	
435	1969	DIME	DEEP GROOVE FLAME, CHERRY PICKER	XF	MB	\$12.50	
436	1970	DIME	DEEP GROOVE FLAME, CHERRY PICKER	VF	MB	\$3.50	
437	1970D	DIME	DEEP GROOVE FLAME, CHERRY PICKER	XF	MB	\$2.50	
438	1978	DIME	RIM CLIP @ 3:00	XF	MB	\$1.50	
439	1985D	DIME	SEVERE WORN DIES LOOKS BRDSTRK	BU	MB	\$1.50	
440	1988	DIME	NICE CLASHED DIES	AU	MB	\$3.50	
441	199(4)D	DIME	VERY WEAK LOW PRESSURE STRIKE	BU	MB	\$1.00	
442	1995	DIME	CENTERED BRDSTRK CENT SIZE	BU	MB	\$7.00	
443	1999D	NICK	LOT OF 10 35-75% OFF CENTER NICKELS	BU	MB	\$135.00	
444	2004	DIME	OBV CLAD LAYER OFF BEFORE STRUCK, RED BROWN	BU	MB	\$49.00	
445	2004D	DIME	DDO WILD DOULE EAR. FS-101	BU	MB	\$85.00	
446	2005P	DIME	6% OFF CENTER	BU	MB	\$12.00	
447	2011	DIME	LARGE UNCENTERED BRDSTRK	BU	MB	\$11.00	
448	2011	DIME	LARGE UNCENTERED BRDSTRK	BU	MB	\$11.00	
449	2014	DIME	PRE-SHATTERED DIE SPIKED HEAD	UNC	MB	\$5.00	
450	ND	DIME	CLAD TY 1 BLANK	UNC	MB	\$2.50	
*	451	ND	DIME	TY 1 SILVER BLANK, 10% RAGGED CLIP	UNC	MB	\$55.00
*	452	ND	DIME	SILVER BLANK W/ 50% STRAIGHT CLIP & 5% CURVED CLIP	UNC	MB	\$65.00
*	453	ND	DIME	TY 1 SILVER BLANK, APPROX 50% RAGGED	UNC	MB	\$70.00
454	ND	DIME	SILVER 77% O/C 1:30 W/ CHAIN EDGE DSBS	UNC	MB	\$85.00	
455	ND	DIME	CLAD DIME BOWTIE SCRAP 10 PIECES	UNC	MB	\$35.00	
456	ND	DIME	LOT OF 10, 50-80% O/C DIMES	UNC	MB	\$96.00	
467	1866	NICK	3 REV DENTICLE CUDS. 6, 8 & 9:00	CIRC	MB	\$45.00	
468	1866	NICK	NICE DOUBLE CUD OBV, 3 & 9:00	GOOD	MB	\$55.00	
*	469	1867	NICK	NO RAYS. TRIPLE CUD OBV & REV CUD	FIN	MB	\$65.00

470	1869	NICK	RETAINED CUD OBV 2-4:00	GD	MB	\$18.00
471	1869	NICK	LARGE RETAINED CUD OBV 9-11:00	GD	MB	\$36.00
*	472	1869	NICK LARGE OBV CUD 2-4:00. RARE	VG	MB	\$55.00
473	1900	NICK	DDR. FS-801	VG/F	MB	\$32.00
474	1906	NICK	LARGE LAMINATION FLAKES OBV	GD	MB	\$2.50
475	1911	NICK	LAMINATION ON RIM	CIRC	MB	\$1.00
*	476	1916S	NICK 5% O/C @ 10:00, SCARCE DATE	VXF	MB	\$275.00
477	1921	NICK	OBVERSE LAMINATION	GD	MB	\$4.50
478	1930S	NICK	NICE REVERSE LAMINATION	FIN+	MB	\$2.50
479	1935	NICK	DOUBLED DIE REVERSE	FIN	MB	\$45.00
480	1939	NICK	STRONG DDR #1. FS-101	FIN	MB	\$35.00
481	1939	NICK	STRONG DDR #1	VF	MB	\$39.00
482	1941S	NICK	LARGE "S". FS-501	FIN	MB	\$4.50
483	1954SD	NICK	S/D. STRONG OBV MM #1	XF	MB	\$22.00
484	1954SD	NICK	S/D, EDS	XF	MB	\$28.00
485	1955DS	NICK	D OVER S MINT MARK	AU	MB	\$25.00
486	1964	NICK	STRUCK ON CENT PLANCHET	AU	MB	\$195.00
487	1968D	NICK	STRUCK ON CENT PLANCHET, TOUGH DATE	UNC	MB	\$425.00
488	1977	NICK	ON CENT PLANCHET	MS63	MB	\$245.00
489	1977D	NICK	STRUCK ON CENT PLANCHET	UNC	MB	\$145.00
490	1980-9	NICK	10 COINS, DIFFERENT DATE/MM. 30-75% OFF CENTER	BU	MB	\$195.00
491	1990-9	NICK	10 COINS, DIFFERENT DATE/MM. 30-75% OFF CENTER	BU	MB	\$165.00
*	492	ND	NICK 100% STRUCK THRU OBV CAPPED DIE & 45% OBV BROCKAGE. COOL!	AU	MB	\$95.00
*	493	19XX	NICK D/S. 2ND STRIKE 80% O/C UNIFACE	UNC	MB	\$20.00
*	494	ND	NICK STRUCK THRU LATE STAGE CAPPED DIE	UNC	MB	\$35.00
495	ND	NICK	5 PIECES, BOW-TIE LIKE WEBBING SCRAP	UNC	MB	\$27.00
506	1854	H10c	PLANCHET CRACK 8:00 + GIANT DATE MERGES INTO ROCKS	XF	MB	\$65.00
507	1872	H10c	STRONG DDO. FS #4	VF	MB	\$85.00
508	1865	NIK3c	DOUBLE REV CUDS 10 & 11:00	FIN	MB	\$39.00
509	1865	NIK3c	LARGE REV CUD. RARE	FIN	MB	\$45.00
510	1865	NIK3c	REV CUD #13A LDS	XF	MB	\$46.00
511	1865	NIK3c	LARGE LAMINATION CRACKS OBV	AU58	MB	\$60.00
*	512	1866	NIK3c 85% CRACK ACROSS PLAN BOTH SIDES, ALMOST BROKEN IN HALF	FIN	MB	\$69.00
513	1881	NIK3c	STRONG REPUNCHED DATE	VF	MB	\$27.00
514	1864	2CENT	100 DEG ROTATED REV, SPOTS	FIN*	MB	\$15.00
515	1864	2CENT	170 DEG ROTATED REV	XF	MB	\$49.00
516	1808	1/2C	75 DEG ROTATED REV	VG	MB	\$95.00
517	1809	1/2C	135 DEG CLW ROTATED REV	GD	MB	\$65.00
528	1801	CENT	S-221. 1/100 OVER 1/000 + REV CUD AT "STA". REV DIG	FIN*	MB	\$99.00
529	1802	CENT	CUD AT 1:00	GD	MB	\$55.00
530	1835	CENT	STRONG DOUBLE PROFILE & SMALL REV LAMINATIONS	FIN	MB	\$42.00
*	531	1851	CENT LOOKS LIKE OLD BRDSTRK OBV & REV MIRROR BROCKAGE, BUT IS FAKE ERROR	VG	MB	\$99.00
532	1854	CENT	REV ROTATED 90 DEG, MAJOR CORROSION	GD	MB	\$28.00
533	1854	CENT	REV ROTATED 85 DEG CW	GD	MB	\$30.00
534	1857	CENT	DEEP LAMINATION EDGE FRONT OF DATE ACROSS EAGLE'S NECK	VF	MB	\$32.00
535	1858SL	CENT	LAMINATION FLAP ATTACHED REV 3-4:00, CLAMSHELL LIKE	VG	MB	\$42.00
536	1858SL	CENT	REV CUD. FEH-8R	FIN	MB	\$79.00
537	1862	CENT	REV RETAINED CUD 11:00. RARE	FIN	MB	\$39.00
538	1864L	CENT	REPUNCHED DATE. FS-2302	GD	MB	\$45.00

539	1872	CENT	REV CUD 9-10:00. VERY RARE KEY DATE	AG	MB	\$55.00
540	1872	CENT	UNLISTED OBV CUD. VERY RARE KEY DATE	GD	MB	\$145.00
541	1884	CENT	UNCENTERED BRDSTRK & NICE CUD REV @ 10:30	AU	MB	\$235.00
542	1888	CENT	LARGE REV CUD 3-4:00. VERY RARE	GD	MB	\$39.00
543	1904	CENT	UNCENTERED BRDSTRK, LOOKS 7% O/C	GD	MB	\$46.00
544	1917S	CENT	REV SPLIT DIE 4-9:00	AU	MB	\$40.00
545	1924S	CENT	OBV LAMINATION ON HEAD	VG	MB	\$1.50
546	1944	CENT	5% OFF CENTER 4:00	UNC	MB	\$12.00
*	547	1946	CENT NEAR FOOTBALL SHAPE ELLIPTICAL CLIPPED PLAN. BROWN	UNC	MB	\$85.00
548	1952D	CENT	CENTERED BRDSTRK	UNC	MB	\$25.00
549	1960D	CENT	SM/LG DATE. FS-101. REV SCRATCH	XF	MB	\$29.00
*	550	1961	CENT D/S 2ND STRIKE 65% O/C UNIFACE. 2 DATES! FULL MM AREA ON 2 ND SUPER RARE DATE FOR O/C AND D/S	UNC	MB	\$425.00
551	1961D	CENT	RPM D/D	UNC	MB	\$1.50
552	1965	CENT	97% OFF CENTER, DATE BARELY SHOWS	UNC	MB	\$25.00
*	553	1969S	CENT HUGE CUD LC-4 5-8:00. CORROSION AND RIM TICKS	XF	MB	\$35.00
554	196XD	CENT	ROLLED THIN, 33.8 GRAINS, SPOT @ 10:00 OBV	AU	MB	\$22.00
555	1970S	CENT	S/S, RPM #4	BU	MB	\$3.50
556	1970S	CENT	NICE ATHIEST CUD. LC-70S-4	BU	MB	\$60.00
557	1973D	CENT	MISALIGNED OBV DIE	AU	MB	\$0.50
558	1974D	CENT	2 COINS, ALMOST MATED PAIR, 20% INDENT & 80% O/C UNI COIN. NEAT	UNC	MB	\$65.00
559	1975D	CENT	GEM RED, 70% O/C 11:00 CHAIN STRIKE	BU	MB	\$22.00
*	560	1976	CENT LARGE CUD 11:00-1:00. LC-76-3	UNC	MB	\$115.00
561	1976D	CENT	55% OFF-CENTER, SCRATCH REV	UNC	MB	\$16.00
562	1982D	CENT	DIRTY STRUCK ON UNPLATED ZINC PLAN	XF	MB	\$5.00
563	1983	CENT	VERY HIGH RIM, REV BADLY SCRAPED	AU*	MB	\$2.00
564	1984	CENT	50% OFF-CENTER 8:00	UNC	MB	\$4.50
565	1984X	CENT	50% OFF-CENTER 8:00	BU	MB	\$10.00
566	198(5)	CENT	10% OFF-CENTER 7:00	UNC	MB	\$9.00
567	1985D	CENT	"BLACK BEAUTY" UNPLATED ZINC CENT	BU	MB	\$65.00
568	1987	CENT	50% OFF-CENTER 8:00	UNC	MB	\$9.50
569	1987D	CENT	60% OFF-CENTER 12:00	UNC	MB	\$14.00
570	1987D	CENT	75% OFF-CENTER 10:00 UNIFACE REV	UNC	MB	\$14.00
571	1995	CENT	DDO. FS-101 + DIE CHIP ON "9" OF DATE	BU	MB	\$39.00
572	1998	CENT	WIDE "AM". RED	MS64	MB	\$7.50
573	1999D	CENT	NICE BROADSTRIKE	BU	MB	\$6.00
574	2000	CENT	WIDE "AM"	UNC	MB	\$8.00
575	2001	CENT	NICE BROADSTRIKE	BU	MB	\$3.00
576	2001	CENT	NICE BROADSTRIKE	BU	MB	\$4.00
577	2009	CENT	LINCOLN #2. DOUBLED THUMB, DDR-004	BU	MB	\$1.00
578	2011	CENT	DDO, VERY STRONG DDO. WDDO-005	MS63	MB	\$45.00
579	ND	CENT	BLANK PLANCHET	UNC	MB	\$1.00
580	MULT	CENT	3 COINS ALL WHEAT, 2 LAM & 1 STRIKE THRU OVER DATE	CIRC	MB	\$1.50
581	ND	CENT	COPPER, 75% OFF-CENTER 8:00	BU	MB	\$3.00
582	ND	CENT	TY I COPPER BLANK, RED	BU	MB	\$3.75
583	ND	CENT	STRUCK THRU LATE STAGE CAPPED DIE	UNC	MB	\$19.00
584	ND	CENT	STRUCK THRU CAPPED DIE OBV	UNC	MB	\$25.00
*	585	ND	CENT LATE STAGE FULL BROCKAGE BY MASSIVELY EXPANDED OFF-CENTER COIN	UNC	MB	\$45.00
*	586	ND	CENT TY I BLANK PLAN, W/ 40% CURVED CLIP + 2 OVERLAPPING SMALLER CLIPS, CUTE!	UNC	MB	\$45.00
587	ND	CENT	60% OFF-CENTER 4:00 UNIFACE SPREAD STRIKE	BU	MB	\$15.00

* 588 ND	CENT	ZINC. 55% O/C 5:00. CHAIN STRIKE W/ UNUSUAL INDENT	BU	MB	\$15.00
* 589 ND	CENT	ZINC. HUGE MUSHROOM SHAPED LARGE BRDSTRK + 55% BROCKAGE. RED	MS65	MB	\$65.00
* 590 ND	CENT	100% STRUCK THRU CLOTH, SUBTLE HORIZONTAL WEAVE	UNC	MB	\$120.00
591 ND	CENT	TY 2 UNPLATED ZINC PLANCHET	BU	MB	\$4.50
592 ND	CENT	TY 1 UNPLATED ZINC PLANCHET	BU	MB	\$6.50
* 603 1975	OTHER	EL SALVADOR, 25 CENTAVOS. 18% OFF-CENTER @ 12:00	UNC	MB	\$22.00
604 1949F	OTHER	GERMANY, 10 PFENNIG. RIM BURR 6:00	VF	MB	\$1.50
605 ND	OTHER	INDIA, 2 RUPEES. 1990'S STYLE TY 2 PLANCHET	BU	MB	\$5.00
606 2001	OTHER	INDIA, 5 RUPEES. 10% OFF-CENTER	XF	MB	\$4.00
607 1902	OTHER	MALDIVES, 4 LARIAT. KM 40.1. DOUBLE STRUCK ON CENTER + SMALL RIM CLIP	XF	MB	\$12.50
608 1808	OTHER	PERU, 8 REALES. ELLIPTICAL CLIP SECURITY EDGE ALL AROUND COIN. UNIQUE?	FIN	MB	\$230.00
619 1993	TOKEN	MISSISSIPPE BELLE II. SUPER SPREAD DOUBLE DIE & REG 5 CENT CASINO TOKEN PAIR	CIRC	MB	\$15.00
620 1876	TOKEN	TOKEN PIECE? ROUGHLY 50% MISSING, LOOKS LIKE SEATED LIBERTY	FIN*	MB	\$2.50
621 MULT	DOLL	30 PRESIDENTIAL DOLLARS W/ EDGE ERRORS	UNC	MB	\$120.00
630 1852	CENT	ROTATED REV 20 DEGREES	FIN	MB	\$23.00
631 MULT	CENT	4 COINS. 1860, 1890, 1900 & 1907 CENTS, ALL WITH CLIPS	GD	MB	\$12.00
632 1914-83	CENT	21 COINS. BETTER LINCOLNS GROUP	MULT	MB	\$21.00
633 1914	CENT	95% LOST REV LAMINATION	VG	MB	\$18.00
634 1917-18	CENT	6 COINS. 1917 & S, 1918 & S. LAMINATED	VG	MB	\$12.00
635 1967-74	CENT	5 COINS. MISALIGNED OBV DIE	AU	MB	\$12.00
636 1980-91	CENT	5 COINS. MISALIGNED OBV DIE	AU	MB	\$12.00
637 1920-45	CENT	6 COINS. ALL CLIPS	CIRC	MB	\$10.00
638 1940-80	CENT	5 COINS. STRAIGHT CLIPS	CIRC	MB	\$10.00
639 1920	CENT	STRUCK ON WRONG PLANCHET. 2.65G	VG	MB	\$18.00
640 1926S	CENT	LAMINATION - FOLDED FLAP CENT	CHVF	MB	\$20.00
641 1964-70	CENT	4 COINS. 1964D & 1970S. 2 CLIP & 2 RIM CLIP CENTS	XFAU	MB	\$10.00
642 1973	CENT	2 COINS. 1973 & D. CAPPED DIE STRIKE. 1 COIN AU, 1 COIN UNC	AU	MB	\$45.00
643 ND	CENT	MEMORIAL. SADDLE STRIKE @ 1:00	AU	MB	\$14.00
644 1945-70	CENT	28 COINS. ALL RPMS	CIRC	MB	\$32.00
645 1943	CENT	3 COINS. 2 CLIPS & 1 TY I BLANK PLANCHET	CIRC	MB	\$12.00
646 ND	CENT	COPPER. 4 COINS. 2 TYPE I & 2 TYPE II BLANKS	UNC	MB	\$10.00
647 ND	CENT	15 COINS. TYPE I BLANKS	UNC	MB	\$17.00
648 1906-11	NICK	4 COINS. NICE LAMINATED NICKELS	GD	MB	\$15.00
649 1925D	NICK	ROTATED REV 30 DEG	VG	MB	\$17.00
650 1935S	NICK	REV LAMINATION / FLAP	M63+	MB	\$60.00
651 1943-45	NICK	5 COINS. CLIP WAR NICKELS	CIRC	MB	\$16.00
652 1945-73	NICK	4 COINS. DOUBLE CLIPS	CIRC	MB	\$14.00
653 1944-45	NICK	2 COINS. MAJOR LAMINATION	CIRC	MB	\$10.00
654 1942-45	NICK	2 COINS. LAMINATIONS	UNC	MB	\$10.00
655 1944	NICK	DOUBLE ERROR. 3% CLIP AND LAMINATION	FIN	MB	\$10.00
656 1975-81	NICK	2 COINS. NICE MISALIGNED OBV DIE	AU	MB	\$18.00
657 ND	NICK	SADDLE STRIKE @ 6:00 & 10:00	GEM	MB	\$85.00
658 1947	NICK	SPLIT PLANCHET. REV MISSING	GD	MB	\$10.00
659 1979D	NICK	15% OFF CENTER	GEM	MB	\$10.00
660 1995	NICK	PARTIAL COLLAR	AU	MB	\$13.00
661 1953-76	NICK	10 COINS. ALL CLIPS	CIRC	MB	\$12.00
662 1980	NICK	25% OFF CENTER	CHBU	MB	\$12.00
663 ND	NICK	90% OFF CENTER	UNC	MB	\$10.00

664	ND	NICK	D/S, 2ND STRIKE 75% O/C @ 3:00	AU	MB	\$32.00
665	1994	NICK	60% OFF CENTER	CHBU	MB	\$10.00
666	1964-99	NICK	7 COINS. CLIP, O/C, STRUCK THRU, WAFFEL	CIRC	MB	\$10.00
667	1866	NIK3c	DOUBLE ERROR. RIM CLIP & LAMINATION	GD	MB	\$13.00
668	1936-45	DIME	2 COINS. LAMINATION PEEL & RIM CLIP	CIRC	MB	\$10.00
669	1953-60	DIME	4 COINS. CLIP, STRUCK THRU, LAMINATION, DIE CHIP	UNC	MB	\$15.00
670	1965-98	DIME	5 COINS. CLIP, BLANK, DIE ERROSION, FOLD	UNC	MB	\$12.00
671	1967	DIME	RIM BURR W/ OPPOSITE BLAKELY'S EFFECT	FIN	MB	\$55.00
672	1979	DIME	STRAIGHT CLIP OPPOSITE BLAKELY'S EFFECT	UNC	MB	\$14.00
673	1980D	DIME	CLIP & RIM CLIP	UNC	MB	\$10.00
674	1985D	DIME	MISALIGNED OBV DIE	UNC	MB	\$10.00
675	1973-97	DIME	3 CIONS. BROADSTRUCK, CENTERED & UNCENTERED	UNC	MB	\$10.00
676	1989-96	DIME	2 COINS. MISALIGNED OBV DIE	UNC	MB	\$20.00
677	1997	DIME	SEVERE - OBV STRUCK THRU CLOTH	UNC	MB	\$50.00
678	1999	DIME	PARTIAL COLLAR	UNC	MB	\$12.00
679	ND	DIME	CLAD. 80% OFF CENTER	UNC	MB	\$10.00
680	1947-64	DIME	6 COINS. SILVER. ALL CLIPS	CIRC	MB	\$17.00
681	1965-99	DIME	10 COINS. CLAD. ALL CLIPS	CIRC	MB	\$16.00
682	ND	DIME	7 COINS. TYPE I CLAD BLANKS	UNC	MB	\$11.00
683	1965-73	QUAR	2 COINS. 12% CLIP OPPOSITE BLAKELY'S EFFECT	UNC	MB	\$12.00
684	1965	QUAR	10 COINS. SOME ND. CLIPS, BLANKS ETC.	AU	MB	\$12.00
685	1966-95	QUAR	3 COINS. DOUBLE CLIPS	UNC	MB	\$12.00
686	1984	QUAR	MISALIGNED OBV DIE	UNC	MB	\$12.00
687	1974-99	QUAR	3 COINS. UNCENTERED BROADSTRUCK	UNC	MB	\$20.00
688	2002	QUAR	MAJOR STRUCK THRU GREASE	UNC+	MB	\$12.00
689	ND	QUAR	CLAD. 7 COINS. TYPE II BLANKS	UNC	MB	\$10.00
690	1935D	HALF	CLIP @ 5:30	VG	MB	\$11.00
691	1963D	HALF	LAMINATION / FLAP @ 12:00	UNC	MB	\$17.00
692	1964	HALF	2% CLIP @ 12:00	UNC	MB	\$10.00
693	1966	HALF	STRUCK THRU GREASE OBV & REV	UNC+	MB	\$18.00
694	1967	HALF	3 COINS. SILVER. ALL CLIPS	AU+	MB	\$15.00
695	1969D	HALF	OCCLUDED GAS BUBBLE 7-11:00 OBV	GEM	MB	\$60.00
696	1969D	HALF	WIRE RIM 9:00-3:00	AU	MB	\$10.00
697	1971	HALF	OBV LAMINATION EXPOSED CLAD	UNC	MB	\$10.00
698	1976	HALF	MINOR STRUCK THRU 9:00	GEM	MB	\$10.00
699	1995	HALF	MAJOR LOWER OBV STRUCK THRU GREASE	UNC	MB	\$30.00
700	1996	HALF	OBV SHEEK DIE CRACK	UNC	MB	\$10.00
701	1997	HALF	STRUCK ON THIN UNDERWEIGHT PLAN, 10.96G	AU	MB	\$110.00
702	2000	HALF	ROTATED REV 35 DEGREES	UNC+	MB	\$65.00
703	ND-D	HALF	FRANKLIN. STRUCK THRU: REV EAGLE, OBV DATE	FIN	MB	\$40.00
704	1879S	DOLL	REV 78. 12 OBVERSE PLANCHET CHIPS	XF+	MB	\$36.00
705	1883O	DOLL	OBV PLANCHET FLAW / CHIP @ 11:00	VG+	MB	\$24.00
706	1886	DOLL	OBV STRUCK THRU SLAG	UNC	MB	\$56.00
707	1898	DOLL	REV PLANCHET CHIP ON EAGLE	XF+	MB	\$33.00
708	1904	DOLL	OBV ROLLED IN SLAG	AU+	MB	\$34.00
709	1921	DOLL	MORGAN. MAJOR REV LAMINATION	AU+	MB	\$80.00
710	1921	DOLL	MORGAN. RIM CLIP @ 4:00	XF+	MB	\$45.00
711	1921	DOLL	MORGAN. OBV STRUCK THRU 7:00	XF	MB	\$28.00
712	1921	DOLL	MORGAN. OBV RIM CUDS	AU	MB	\$26.00
713	1921	DOLL	PEACE. OBV LAMINATION	AU	MB	\$145.00
714	1922	DOLL	OBV LAMINATION NOSE TO 9:00	AU	MB	\$39.00
715	1922S	DOLL	REV EXTRA METAL 5:00	UNC	MB	\$36.00
716	1923D	DOLL	SEVERE OBV & REV DIE CRACKS	AU	MB	\$26.00
717	1923S	DOLL	OBV LAMINATION NOSE TO 8:00	FIN	MB	\$36.00
718	1924	DOLL	REV STRUCK THRU	FIN	MB	\$25.00

719	1935	DOLL	REV LAMINATION 6:00	XF+	MB	\$36.00
720	1971D	DOLL	PARTIAL DOUBLE OBV RIM	AU	MB	\$12.00
721	1972D	DOLL	5% CLIP	UNC+	MB	\$41.00
722	1979	DOLL	MAJOR OBV STRUCK THRU GREASE	UNC	MB	\$26.00
723	2006D	DOLL	REV STRUCK THRU WIRE	UNC+	MB	\$40.00
724	2007D	DOLL	PLAIN EDGE	UNC+	MB	\$52.00
725	1792	OTHER	DUTCH, UTRECHT. 10% CLIP	XF	MB	\$10.00
726	1826	OTHER	DUTCH INDIES. 10% CLIP	VF	MB	\$10.00
727	ND	CENT	CANADA. DIE CAP	UNC	MB	\$20.00
728	ND	OTHER	VIETNAM 1 DONG. 60% CLAMSHELL SPLIT LAMINATION	AU	MB	\$10.00
729	ND	OTHER	FOREIGN, VARIOUS COUNTRIES & DENOM. NICE ERRORS	CIRC	MB	\$10.00
740	1941	CENT	DDO. FS-01-1941-102 (018.1)	F/VF	MB	\$20.00
741	MULT	CENT	2 COINS. 1950-S, S/S N. RPM #4 FS-01-1950S-504 XF/AU. 1960-D LG DATE D/D S-E CONECA RPM-049 BU	MULT	MB	\$15.00
742	1960	CENT	2 COINS. SM DATE. PREMIUM BU. RED	MS64	MB	\$20.00
743	1964D	CENT	"MULTIPLE VARIETIES" RPM, DIE CHIP & LAMINATION	BU	MB	\$10.00
744	1982	CENT	DDO. FS-01-1982-101 (034.5)	XFAU	MB	\$15.00
745	1982	CENT	DDO. FS-01-1982-101 (034.5)	XFAU	MB	\$15.00
746	1984	CENT	DDO. EAR. FS-01-1984-01 (037)	AU+	MB	\$100.00
747	1984	CENT	DDO. EAR #2. WDDO-008	AU+	MB	\$70.00
748	1995	CENT	DDR. EXTRA COLUMNS IN BAYS 11-12-WDDO-010	MS65	MB	\$50.00
749	2013	CENT	DDR-001. I-R-VI NEW DDR. RED BROWN	UNC	MB	\$10.00
750	1954S	NICK	RPM-001. FS-05-1954S-502 (033.1)	BU	MB	\$15.00
751	1954S	NICK	S/D OMM. FS-05-1954S-501 (033)	XFAU	MB	\$12.00
752	1964D	NICK	DDR. WEXLER: WDDR-008	AU	MB	\$15.00
753	1964D	NICK	DDR. WEXLER: WDDR-008	BU	MB	\$30.00
754	1966	NICK	"HIGH RELIEF BUSINESS STRIKE" C.C ROTATED REV	BU	MB	\$20.00
755	1982	NICK	MAJOR OBV DIE MISALIGNED	AU	MB	\$5.00
756	1994D	NICK	DDR & NO DOME REV	BU	MB	\$6.00
757	1995	HALF	CLASHED DIES OBV & REV	BU+	MB	\$15.00
758	VAR	VAR	LOT OF 30 MIXED MAJOR ERROR COINS FROM INDIA OFF CENTER, BROKAGES, ETC ON VARIOUS DENOMINATIONS	VAR	MB	\$110.00
759	VAR	VAR	LOT OF 20 IDENTIFIED FOREIGN MINOR ERRORS	VAR	MB	\$4.00
760	VAR	CENT	LOT OF 50 IDENTIFIED U.S. MINOR ERRORS	VAR	MB	\$10.00
761	VAR	DIME	LOT OF 50 IDENTIFIED U.S. MINOR ERRORS	VAR	MB	\$15.00
762	VAR	DOLL	LOT OF 10 IDENTIFIED GOLDEN DOLLAR ERRORS, MOSTLY EDGE ERRORS, EXTRA LETTERS, STARS, LETTERING SPACING ERRORS.	BU	MB	\$35.00
763	VAR	NICK	OLD-TIME HOARD OF 10 25-85% OFF CENTER NICKELS WITH DATES 1983-1999 SAVED OVER YEARS BY EMPLOYEE AT COIN ROLLING ROOM.	UNC	MB	\$170.00
764	VAR	NICK	SAME AS ABOVE	UNC	MB	\$170.00

THANK YOU!

7	\$295.00		226	\$40.00		474	\$1.10	R	591	\$6.60	R
13	\$23.00		227	\$50.00		476	\$7.09		592	\$16.61	R
28	\$14.30	R	229	\$25.00		478	\$2.96	R	593	\$5.00	
29	\$14.30	R	244	\$29.50		479	\$22.00		623	\$20.00	
39	\$25.00		250	\$35.00		480	\$20.35	R	627	\$20.00	
40	\$15.00		255	\$214.50	R	481	\$3.03	R			
56	\$195.00		265	\$125.00		482	\$11.00	R			
86	\$35.00		267	\$12.00		483	\$115.00				
87	\$230.00		270	\$65.00		485	\$0.55	R			
96	\$500.00		280	\$180.00		488	\$33.00	R			
101	\$42.00		283	\$20.59		489	\$1.65	R			
102	\$8.00		285	\$6.60	R	490	\$12.00				
104	\$75.00		287	\$3.85	R	492	\$1.38	R			
105	\$42.90	R	292	\$17.60	R	495	\$14.00				
108	\$30.80	R	293	\$60.00		497	\$21.75	R			
109	\$56.10	R	304	\$16.00		498	\$1.38	R			
112	\$110.00	R	305	\$22.00		499	\$1.38	R			
116	\$65.00		310	\$44.00	R	500	\$3.81	R			
118	\$6.55		311	\$145.00		501	\$18.00				
120	\$150.00		313	\$4.50		502	\$8.00				
131	\$20.00		330	\$12.00		503	\$14.00				
133	\$39.00		331	\$78.00		506	\$28.45	R			
134	\$55.00		335	\$3.50		507	\$78.00				
136	\$37.40	R	336	\$3.50		508	\$235.00				
137	\$37.00		337	\$39.00		512	\$0.50				
139	\$23.10	R	345	\$1.00		513	\$3.75				
140	\$75.00		362	\$2.20	R	527	\$65.00				
141	\$91.30	R	372	\$39.00		529	\$36.00				
143	\$100.00		373	\$4.40	R	530	\$15.00				
144	\$75.00		375	\$1.00		531	\$15.00				
145	\$29.00		378	\$2.20	R	533	\$18.00				
153	\$45.00		382	\$2.20	R	534	\$8.80	R			
154	\$20.00		389	\$1.42	R	535	\$3.50				
155	\$65.00		395	\$0.82	R	536	\$95.00				
157	\$30.00		396	\$1.10	R	542	\$35.00				
158	\$25.00		406	\$1.38	R	554	\$5.00				
159	\$100.00		409	\$2.20	R	555	\$7.50				
163	\$75.00		410	\$38.00		557	\$6.00				
165	\$35.00		411	\$19.00		559	\$3.00				
166	\$25.00		412	\$45.00		560	\$3.00				
168	\$150.00		424	\$39.00		561	\$2.00				
169	\$20.00		436	\$1.42	R	562	\$9.00				
171	\$98.00		444	\$34.84	R	563	\$10.00				
174	\$45.00		453	\$26.00		566	\$4.00				
176	\$52.80	R	457	\$39.60	R	568	\$3.00				
184	\$71.50	R	459	\$235.00		577	\$5.00				
197	\$45.00		460	\$22.00		581	\$2.00				
198	\$72.00		461	\$45.00		584	\$5.00				
204	\$180.00		462	\$39.00		585	\$4.40	R			
212	\$360.00		463	\$137.50	R	587	\$4.00				
225	\$50.00		467	\$4.95		588	\$2.00				
			470	\$2.75	R	589	\$4.00				
			471	\$2.20	R	590	\$4.95	R			

THATS IT FOR THIS SALE. THANKS TO ALL THAT JOINED IN ON THIS ONE.
 R = PRICE REDUCED FROM BID. T = THE BIDS RECEIVED FIRST POST MARK WINS.
 UNSOLD LOTS MAY BE PURCHASED FOR MINIMUM BID OR EST PRICE WITHIN NEXT 2 WEEKS.
 THANKS AGAIN TO ALL OF YOU.

